



## PUBLIC NOTICE

### SPECIAL MEETING OF THE WASHTENAW COUNTY BOARD OF PUBLIC WORKS

Pursuant to Open Meetings Act 267 of 1976, Notice is hereby given by the Washtenaw County Board of Public Works of a Special meeting on:

#### LOWER HURON RIVER CHAIN OF LAKES IMPROVEMENT PROJECT

The Washtenaw County Board of Public Works will hold a special meeting and conduct a public hearing to listen to public commentary to the proposed a Proposed Lake Improvement Project for the Lower Huron River Chain of Lakes concerning parcels with deeded access to and use of the waters of Little Portage, Big Portage, Base Line, Whitewood or Tamarack Lakes or the connecting waters located in Washtenaw County in the Townships of Dexter and Webster and in the townships of Hamburg and Putnam, located in Livingston County. The Board of Public Works will consider a Resolution for the Proposed Lake Improvement Project for the Lower Huron River Chain of Lakes.

Wednesday, July 20, 2022, at 6:30 p.m., local time, held:

**in person** at Dexter Township Hall, 6880 Dexter-Pinckney Road, Dexter, MI 48130

**AND remotely** over Zoom

To attend, type [www.bit.ly/LowerHuronCOL2](http://www.bit.ly/LowerHuronCOL2) into your web browser. Registration is available and recommended in advance through the link provided above.  
OR by typing meeting ID: **862 1888 4382** into zoom "Join a Meeting."

**AND accessible by phone:**

Telephone: +1 646-558-8656, meeting ID **862 1888 4382**

The purpose of the hearing is to hear from interested parties concerning parcels included in the special assessment roll.

Proceedings conducted at this meeting will be subject to the provisions of the Michigan Open Meetings Act and you are further notified that information regarding this meeting may be obtained from the Office of the Washtenaw County Water Resources Commissioner. If you have any questions regarding this notice, please contact the WCWRC at 734.222.6860.

The County of Washtenaw will provide necessary reasonable auxiliary aids and services, such as signers for the meeting impaired and audio tapes of printed materials being considered at the meeting, to individuals with special needs at the meeting upon 7 day notice to the County of Washtenaw. Individuals with special needs requiring auxiliary aids or services should contact the County of Washtenaw by writing or calling the following: Human Resources, 220 North Main Street, P.O. Box 8645, Ann Arbor, Michigan 48107; (734) 222-6800 ext. "0" or TDD (734) 994-1733.



**WASHTENAW COUNTY BOARD OF PUBLIC WORKS  
NOTICE OF PUBLIC HEARING ON THE DESIRABILITY OF  
IMPLEMENTING A WASHTENAW COUNTY LAKE IMPROVEMENT PROJECT AND  
THE ESTABLISHMENT OF SPECIAL ASSESSMENT DISTRICT (SAD)**

**SECOND PUBLIC HEARING NOTICE**

**TO ALL THE RECORD OWNERS OF, AND PARTIES WITH INTEREST IN, ANY LANDS WITHIN THE SPECIAL ASSESSMENT DISTRICT DESCRIBED BELOW:**

**Mailing Date:**

NOTICE IS HEREBY GIVEN that the Washtenaw County Board of Public Works (WCBPW) will meet beginning at 6:30 p.m., Local Time, on **Wednesday, July 20, 2022, at the Dexter Township Hall, located at 6880 Dexter-Pinckney Rd, Dexter, Michigan 48130 or remotely at [www.bit.ly/LowerHuronCOL2](http://www.bit.ly/LowerHuronCOL2)** or by phone at 1-646-558-8656 ID 862 1888 4382 at the time of the meeting. Online attendees are encouraged to register in advance by typing the weblink into their browser. The meeting will conduct a public hearing to hear objections and comments to a proposed Lake Improvement Project (Project) for Little Portage, Big Portage, Baseline, Whitewood, and Tamarack, Lakes in Webster and Dexter Townships in Washtenaw County and in Putnam and Hamburg Townships in Livingston County.

The purpose of the second public hearing is to hear objections to parcels included in the special assessment roll. The assessment shall be placed on the winter tax bill, which will be received on or about December 1, and shall be due and payable with property taxes.

**PROJECT DESCRIPTION:** The proposed Project is a modified reestablishment of a Project started in 2017 that will run out of funds after the 2022 season. The Project will provide lake improvements to Little Portage, Big Portage, Baseline, Whitewood, and Tamarack, Lakes located in Washtenaw and Livingston Counties to control the growth and reproduction of non-native invasive plants, including but not limited to Eurasian watermilfoil and Starry Stonewort. The Project will also work to control the growth of nuisance native plants, including but not limited to Chara and Variable Pondweed. The Project will focus on maintaining the ecological health and recreational use for the water bodies and connecting waters throughout the Project area. Additionally, other items may be included which would provide or enhance recreational opportunities subject to approval of the WCBPW.

The total cost of the Project over the five-year period is estimated at \$1,034,800. The WCBPW has tentatively designated a special assessment district against which all or a part of the cost of such Project is to be assessed, which district consists of the following lands:

All tax parcels identified as having deeded lake access and use of the waters or connecting waters of Little Portage, Big Portage, Baseline, Whitewood, or Tamarack Lakes in Webster and Dexter Townships in Washtenaw County and in Putnam and Hamburg Townships in Livingston County. These properties are located within the boundaries of the Special Assessment District.

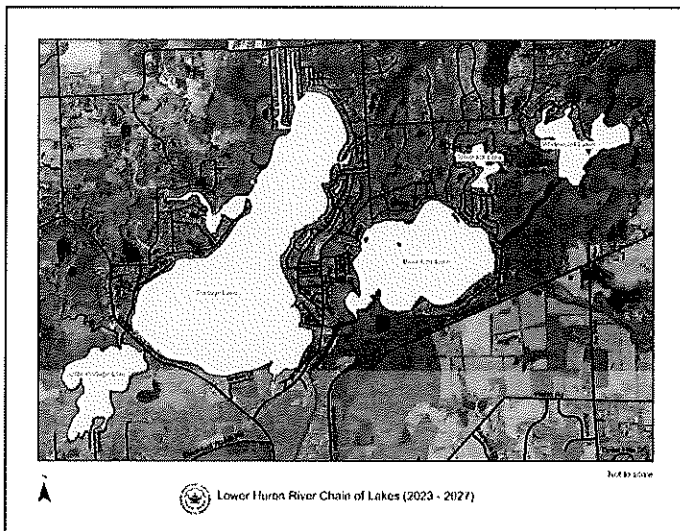
All parcels within the SAD are proposed to be assessed one of the following charges:

- (1) **Basic Charge** (\$98 per year: \$490 over 5 years): All residential properties within the SAD shall be assessed the Basic Charge, deeded lake access not abutting the waters.
- (2) **Waterfront Charge** (\$173 per year: \$865 over 5 years): Any residential property with any part of the parcel abutting the waters (lake, lagoon, canal) shall be assessed the Waterfront Charge.
- (3) **Lake Access Commercial Charge** (\$271 per year: \$1,355 over 5 years): Zoned commercial properties within special assessment district with lake access which are vacant.
- (4) **Base Waterfront Commercial Charge** (\$750 per year: \$3,750 over 5 years) All waterfront commercial parcels within the SAD
- (5) **Waterfront Commercial Charge** (\$750-\$3,750 per year: \$3,750-\$18,750 over 5 years): The Waterfront Commercial Charge is determined by multiplying the Base Waterfront Commercial Charge by a factor number assigned based on the use of the parcel. Some commercial properties derive a greater benefit than others based on the parcel's use. Therefore, the following subcategories define the factor numbers for the commercial properties.

Subcategory	Factor Number		Base Waterfront Charge	=	Total Annual Waterfront Commercial Charge
(a) Commercial property not abutting the water	1	x	\$750	=	\$750
(b) Commercial property abutting the water without dockage or boat launch or DNR Property	1	x	750	=	\$750
(c) Commercial property with boat launch only	2	x	750	=	\$1,500
(d) Commercial property with slips not providing overnight dockage	3	x	750	=	\$2,250
(e) Commercial property with overnight slips for overnight dockage ( <b>less than 50 slips</b> )	4	x	750	=	\$3,000
(f) Commercial property with overnight slips for dockage ( <b>with more than 50 slips</b> )	5	x	750	=	\$3,750

**Exemption:**  
Parcels that are contiguous to an assessed parcel with the same owner will be assessed once at the highest single parcel assessment level.

A report describing the Project including program plans and cost estimates has been prepared and is on file with the Washtenaw County Director of Public Works for public review at [www.washtenaw.org/huronCOL](http://www.washtenaw.org/huronCOL). Parcel charges are available on the same website. For questions or additional Project information, please call 734-222-6865.



PLEASE TAKE FURTHER NOTICE that the owner, or any person having an interest in property that is specially assessed, may file a written appeal with the Michigan Tax Tribunal within thirty (30) days after confirmation of the special assessment roll. However, **appearance and protest (remotely or in person)** at the public hearing on the special assessment roll are **required** in order to appeal the special assessment to the Michigan Tax Tribunal. An owner or a party in interest or his or her agent may (1) appear in person at the hearing to protest the special assessment or (2) file his or her appearance or protest by letter before the close of the hearing. Letters will be read at the hearing.

The WCBPW shall maintain a record of parties who appear to protest at the hearing in person or remotely. If the hearing is terminated or adjourned for the day before a party is provided

the opportunity to be heard, a party whose appearance was recorded shall be considered to have protested the special assessment in person.

The County of Washtenaw will provide necessary reasonable auxiliary aids and services, such as signers for the hearing impaired and audio tapes of printed materials being considered at the meeting, to individuals with special needs who plan to attend the meeting upon seven (7) days' notice to the County of Washtenaw. Individuals with disabilities requiring auxiliary aids or services should contact the County of Washtenaw in writing or calling Human Resources, 734-222-6800 or TDD 734-994-1733, P.O. Box 8645, Ann Arbor, Michigan 48107-8645.

BY ORDER OF THE BOARD OF PUBLIC WORKS

Theo Eggermont, Director of Public Works  
705 N. Zeeb Rd, Ann Arbor MI, 48107-8645

DATED: 6/17/2022